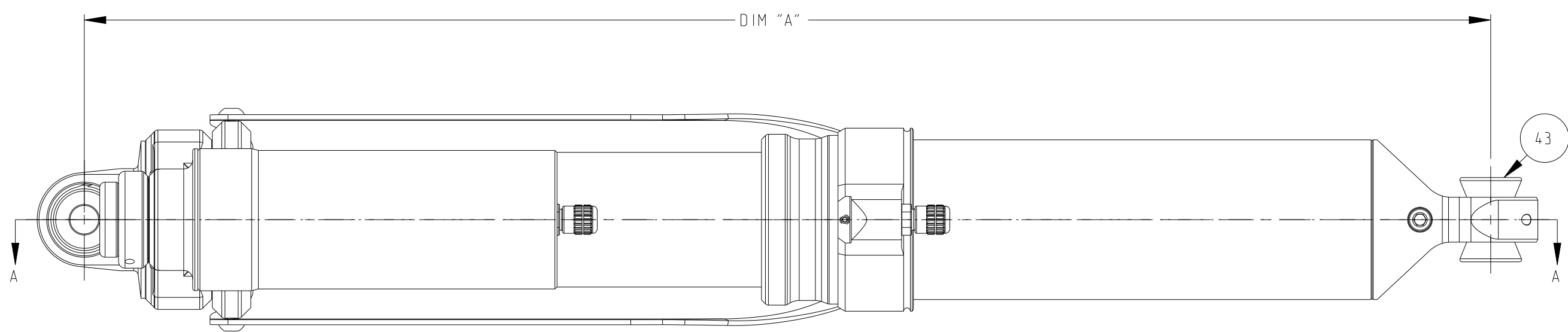
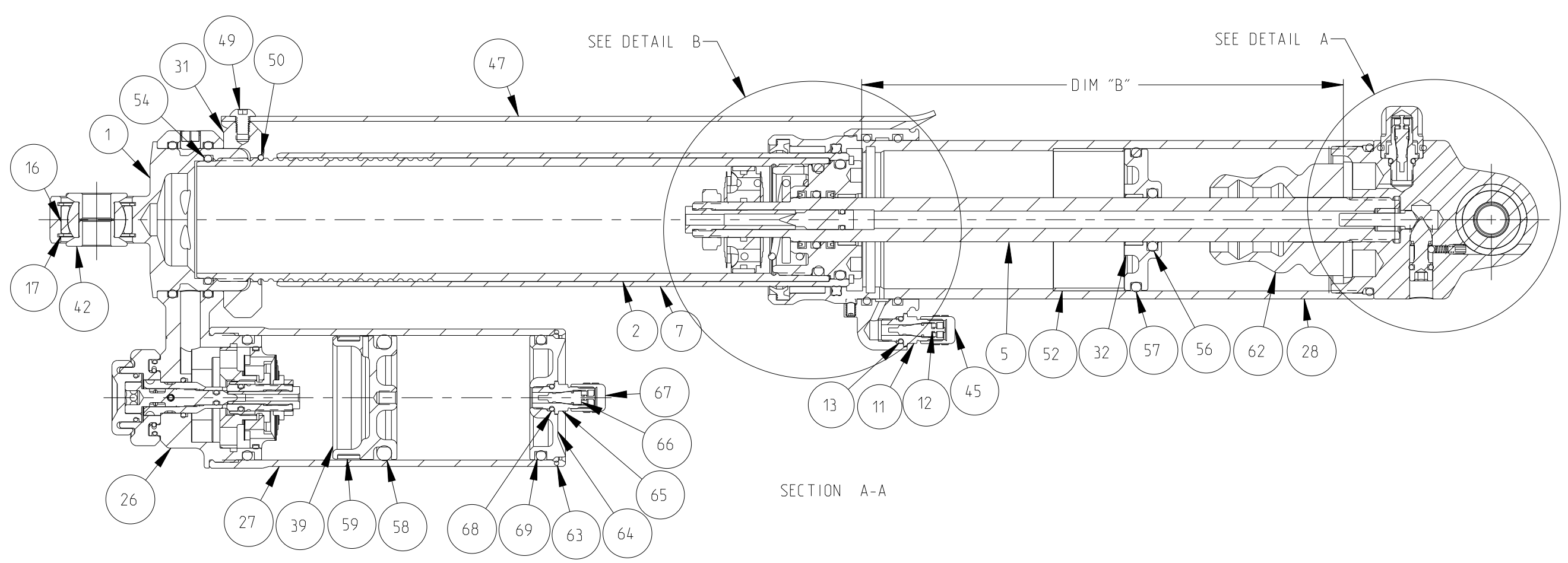
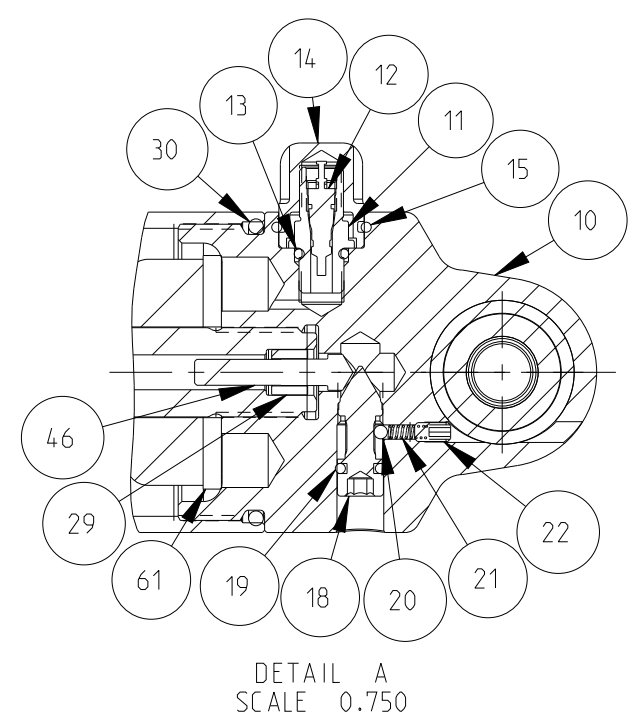
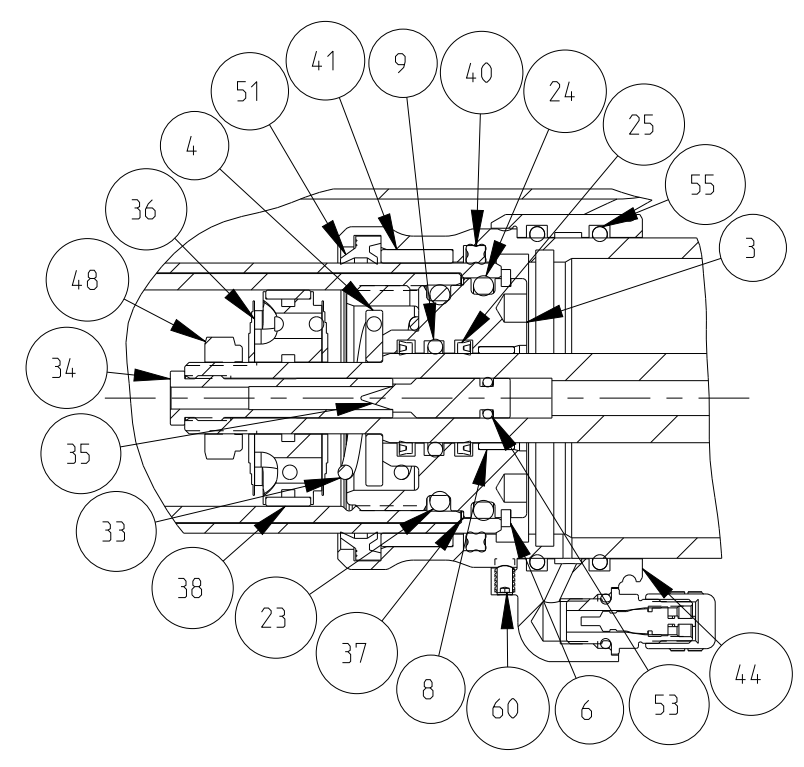
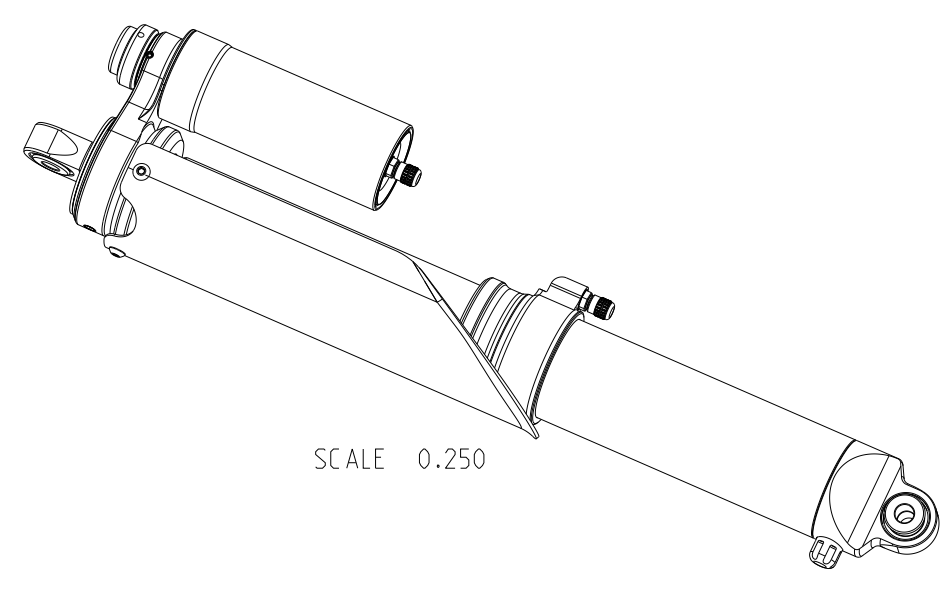


PROCESS		
NO	DESCRIPTION	DONE
1	ASSEMBLE	
2	FINAL PRS INSPECTION	



NO	DRAWING NO	PRS PART NO	DESCRIPTION	QTY
1	BC_AXAL_133B	BC-50PB-AL	BODY CAP, PIGGYBACK RESERVOIR	1
2	BD_53887CO_AL	BD-53887CO-AL	BODY, CUSTOM AXIS 167 SERIES ALUM. ROUND WIRE	1
3	SB_AXAS_MK2_091C	SB-50AS	SHAFT BEARING, AXIS	1
4	VW_5079	VW-5079	TOP OUT PLATE, FRONT AXIS	1
5	SH_509925A	SH-509925A	SHAFT, ADJUSTABLE	1
6	RR_WST_162	RR-53	SMALLEY SPIROLOC RING	1
7	BD_AXAS_HC_XXXX_581B	BD-50AS-CT	INNER BODY	1
8	BU_10DU04	BU-10DU04	DU BUSHING	2
9	OR_2114_B	OR-2114-B	O-RING, BUNA	1
10	BC_50AS_MK2_305C	BC-50AS	BODY CAP, AIRSHOCK, ADJUSTABLE	1
11	IU_22_S	IU-22-S	AIR VALVE, PORT O-RING, S.S.	2
12	IU_04	IU-04	VALVE CORE	2
13	OR_2010_B	OR-2010-B	O-RING, BUNA	2
14	CP_AXAS_057A	CP-50AS	CAP, AIRSHOCK VALVE PROTECTOR	1
15	OR_2015_B	OR-2015-B	O-RING, BUNA	1
16	MO_8T	MO-8T	MONO BALL, 1/2" ID	2
17	RR_16	RR-16	RETAINING RING, 1.00" BORE	4
18	RS_73	RS-73	REBOUND SCREW, 7300 CLICKER	1
19	OR_2009_B	OR-2009-B	O-RING, BUNA	1
20	BA_093_ST	BA-093-ST	3/32" STEEL BALL	1
21	SP_36	SP-36	SPRING, (0-148)	1
22	SC_30	SC-30	SOCKET SET SCREW 6/32 X 1/4	1
23	OR_2219_B	OR-2219-B	O-RING, BUNA	1
24	OR_2221_B	OR-2221-B	O-RING, BUNA	1
25	SL_50AS_SHUCUP	SL-50AS-SHUCUP	SEAL, U-CUP	2
26	AS_50PB-DG	AS-50PB-DG	ASSEMBLY, 5000 PB CD HOUSING DIGRESSIVE	1
27	RB_765	RB-765	RESERVOIR BODY, 8760 SERIES	1
28	RB_AXAS_211C	RB-50AS	RESERVOIR BODY	1
29	BU_04_BZ	BU-04-BZ	BUSHING	1
30	OR_2135_V	OR-2135-V	O-RING, BROWN VITON	1
31	CO_50AS_PB_141A	CO-50AS-PB	COLLAR, PIGGYBACK RESERVOIR	1
32	PI_AXAS_FP_431A	PI-50AS	FLOATING PISTON, AIRSHOCK	1
33	SP_50AS_289	SP-50AS-289	TOP-OUT SPRING	1
34	JT_ADJ50_247B	JT-ADJ50	JET, ADJUSTABLE 50 SERIES	1
35	NE_5018	NE-5018	NEEDLE, CUSTOM AXIS	1
36	PI_5100	PI-5100	PISTON, LINEAR	1
37	VW_AXAS_SB_536A	VW-AXAS-SB	WASHER, AXIS SHAFT BEARING	1
38	PB_5056	PB-5056	PISTON BAND	1
39	PI_57R_618B	PI-57R	FLOATING PISTON	1
40	OR_4225_B	OR-4225-B	O-RING, BUNA	1
41	BU_30DU08	BU-50AS-B0	AXIS AIR SHOCK BODY DU BUSHING	1
42	BU_58123	BU-58123	BUSHING	2
43	BU_58337	BU-58337	BUSHING	2
44	CO_AIRSHCK_INFL_070B	CO-50AS	INFLATION COLLAR	1
45	IU_06	IU-06	INFLATION VALVE CAP	1
46	MR_73_408A	MR-73	METERING ROD, 7300 HEX	1
47	CO_AXSHCV_XXXX	CV-50AS	SHOCK COVER - AXIS, CARBON	1
48	NT_56	NT-56	RING NUT, 1/2"-20 UNF	1
49	SC_10-24X250_BHCS	SC-50AS	N/A	3
50	RR_5167	RR-5167	WIRE RING, .067 WIRE	1
51	SL_AXAS_XXX_V2	SL-50AS-BODY	WIPEP, AXIS SHOCK BODY	1
52	CO_53IFP_100_078A	CO-53100	COLLAR, AIRSHOCK	1
53	OR_50M01	OR-50M01	O-RING, POLYURETHANE	1
54	OR_2130_V	OR-2130-V	O-RING, BROWN VITON	1
55	OR_2139_B	OR-2139-B	O-RING, BUNA	2
56	OR_2208_6568	OR-2208-P	O-RING, POLYURETHANE	1
57	OR_2224_6568	OR-2224-P	O-RING, POLYURETHANE	1
58	OR_2324_B	OR-2324-B	O-RING, BUNA	1
59	PB_55	PB-55	PISTON BAND, 55MM BORE	1
60	SC_6-32_188_SET	SC-31	SCREW, OVAL POINT SET, 6/32 X 3/16	1
61	VW_50162	VW-50162	EXTERNAL SPACER, 1.625X.125	1
62	BR_5002	BR-5002	BUMP RUBBER, BLACK	1
63	RR_06	RR-06	RETAINING RING	1
64	CP_76	CP-76	RESERVOIR CAP, 8760 SERIES	1
65	IU_22_S	IU-22-S	AIR VALVE, PORT O-RING, S.S.	1
66	IU_04	IU-04	VALVE CORE	1
67	IU_06	IU-06	INFLATION VALVE CAP	1
68	OR_2010_B	OR-2010-B	O-RING, BUNA	1
69	OR_2222_B	OR-2222-B	O-RING, BUNA	1

LENGTH OPTIONS				
ASSEMBLY	BODY	SHAFT	DIM "A"	DIM "B"

1	INITIAL RELEASE		SAJ	JAN-30-18
REV	DESCRIPTION		DRAWN	CHECK
		<small>THIS DRAWING AND THE INFORMATION CONTAINED HEREIN IS THE PROPERTY OF PENSKE RACING SHOCKS. IT IS PRIVATE AND CONFIDENTIAL AND IS ISSUED ON THE EXPRESSED CONDITION THAT IT IS NOT COMMUNICATED DIRECTLY OR INDIRECTLY, IN WHOLE OR IN PART, OR USED FOR MANUFACTURE OF ANY PARTS SHOWN HEREIN, WITHOUT THE WRITTEN CONSENT OF PENSKE RACING SHOCKS. ACCEPTANCE OF THIS DRAWING WILL BE CONSTRUED AS ACCEPTANCE OF THE FOREGOING CONDITIONS.</small>		
	DRAWN BY	APPROVED BY	UNSPECIFIED EDGES U.O.S.	MAX SURFACE FINISH U.O.S. (Ra)
	SAJ	JH	EDGE BREAK .010 MAX	CORNER RAD .015 MAX
TOLERANCES U.O.S.	MATERIAL	HEAT TREATMENT	SURFACE TREATMENT	THREAD TOLERANCES U.O.S.
.X ± .025	N/A	N/A	N/A	INCH 2B(INT) 2A(EXT)
.XX ± .010				METRIC 6H(INT) 6g(EXT)
.XXX ± .005				
.XXXX ± .001				
.X° ± .50°				
.XX° ± .25°				
CAD/CAM	DESCRIPTION		SCALE	SHEET
	ASSEMBLY, CUSTOM AXIS, AIR SHOCK		0.625	1 of 1
	DRAWING NUMBER	INTERNAL PART NUMBER	FORMAT SIZE	
	PS_AXAIRX_A642	N/A	C	